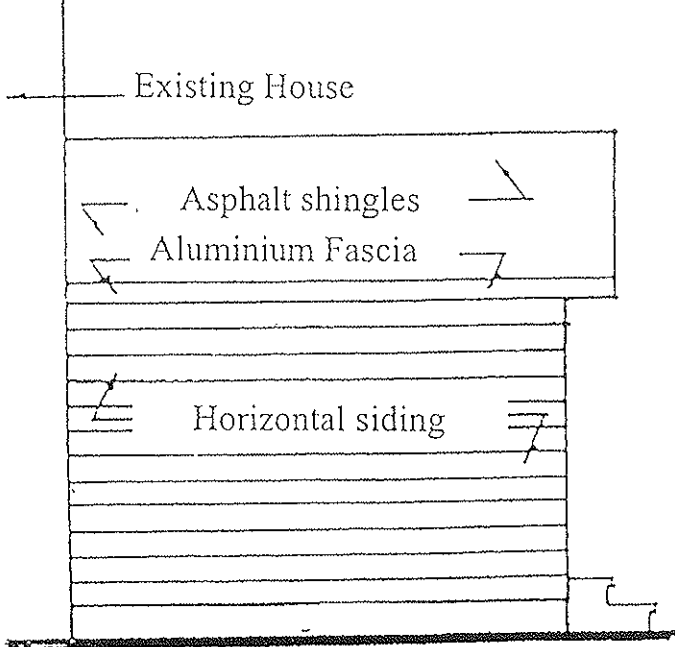


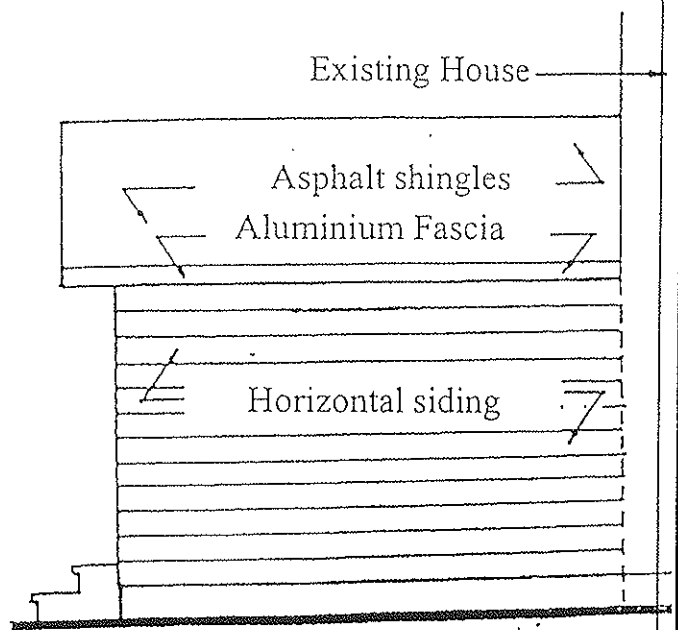
REAR ELEVATION

Scale 1/4" = 1'-0"



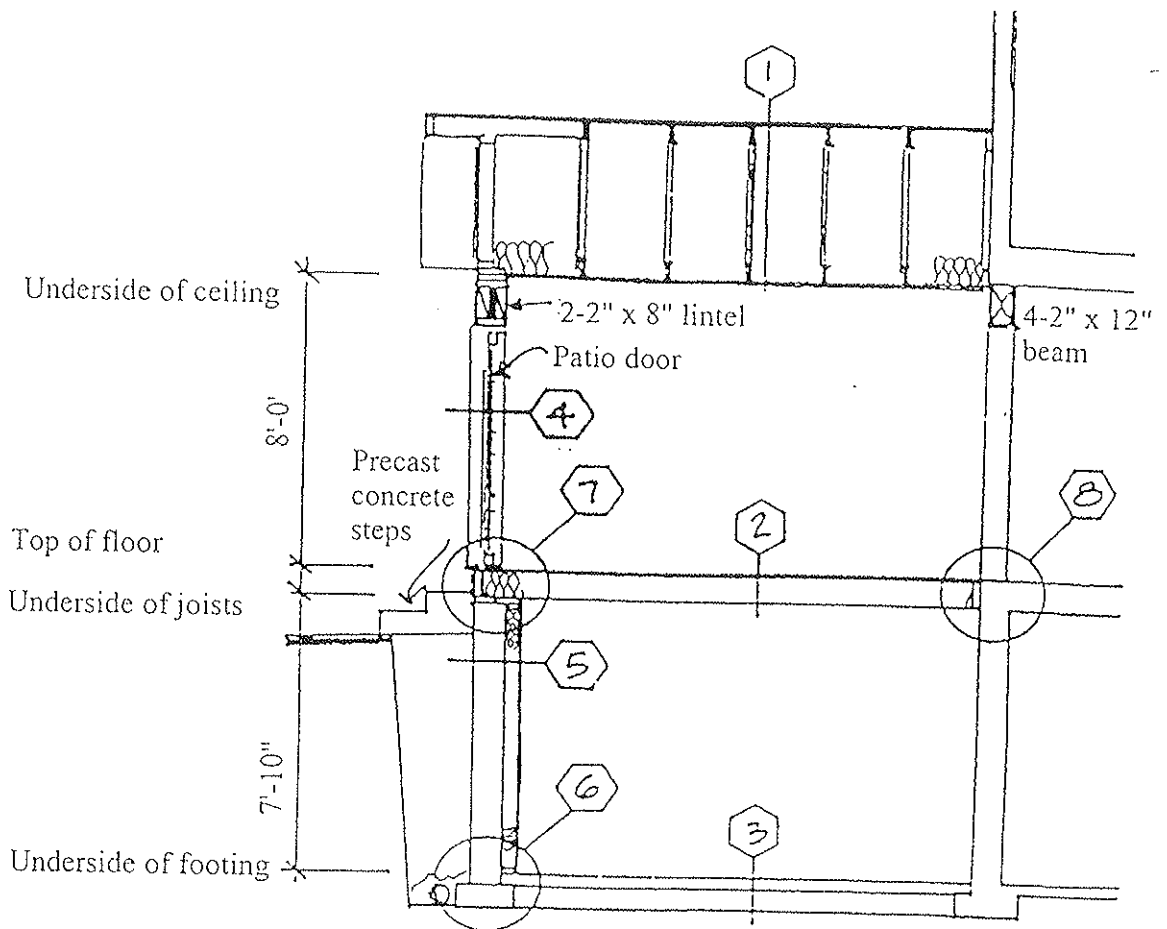
SIDE ELEVATION

Scale 1/4" = 1'-0"



SIDE ELEVATION

Scale 1/4" = 1'-0"



CROSS SECTION
 Scale 1/4" = 1'-0"

CONSTRUCTION NOTES

- 1 ROOF**
- Asphalt shingles
 - Eave protection, 36" up roof slope
 - 3/8" OSB sheathing with H-clips
 - Pre-Engineered roof trusses @24" o.c
 - R31 insulation
 - 6 mil polyethylene vapour barrier
 - 1" x 3" strapping @ 16" o.c
 - 1/2" Drywall

- 2 FLOOR**
- 5/8" OSB subfloor
 - 2" x 10" floor joists @ 16" o.c
 - 1" x 3" strapping @ 16" o.c

- 3 BASEMENT FLOOR**
- 3" concrete slab, 30 MPa
 - 6" granular material

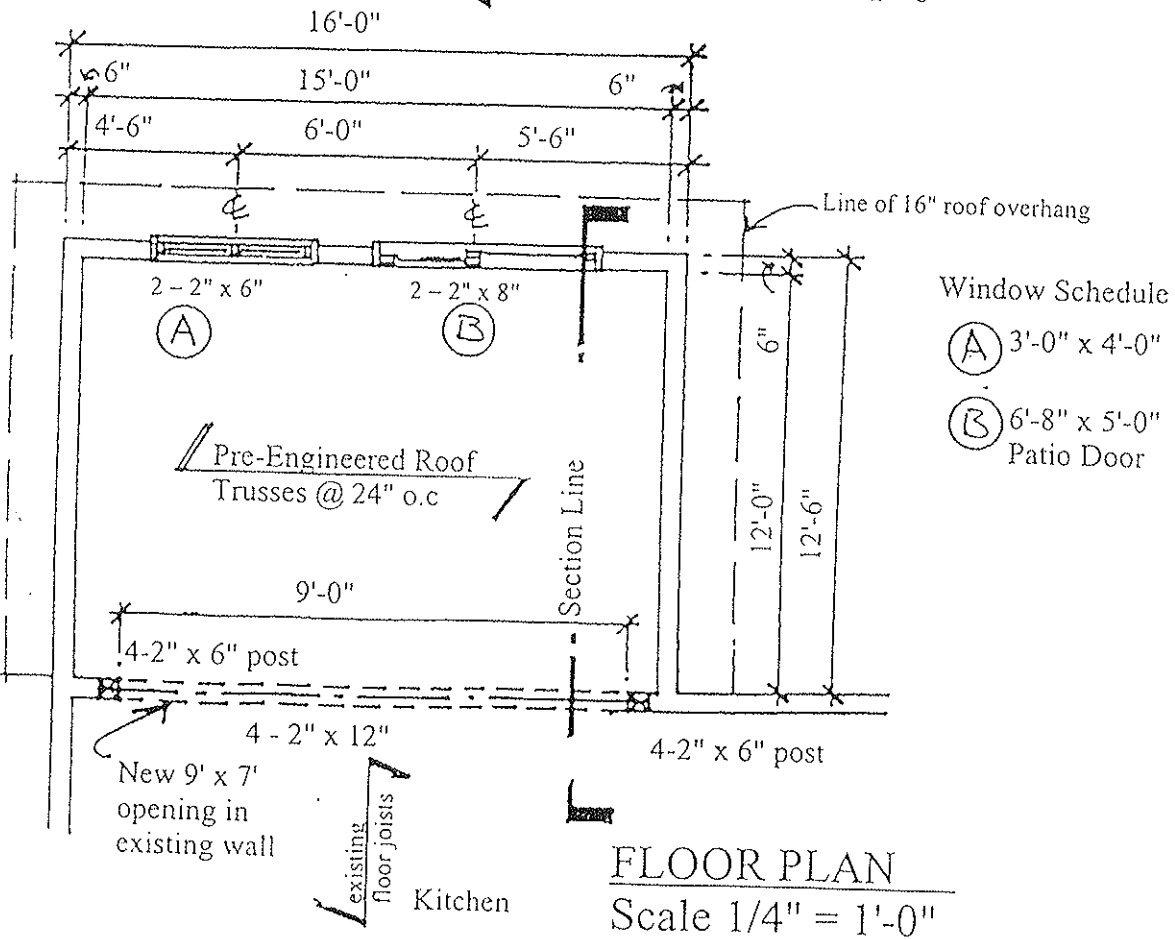
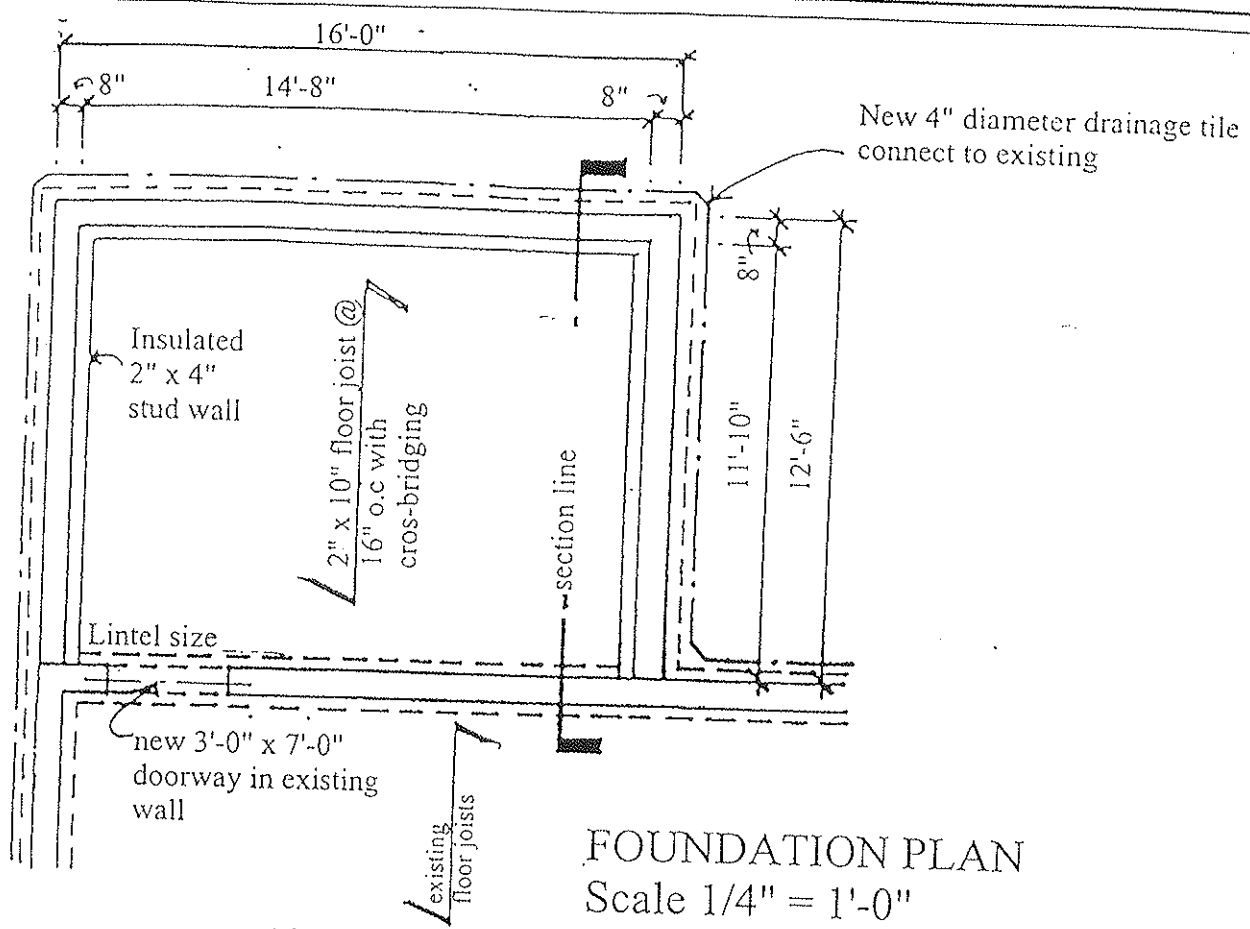
- 4 EXTERIOR WALL**
- Vinyl siding
 - Air barrier
 - 1/4" OSB sheathing
 - 2" x 6" studs @ 24" o.c
 - R17 insulation
 - 6 mil polyethylene vapour barrier
 - 1/2" drywall

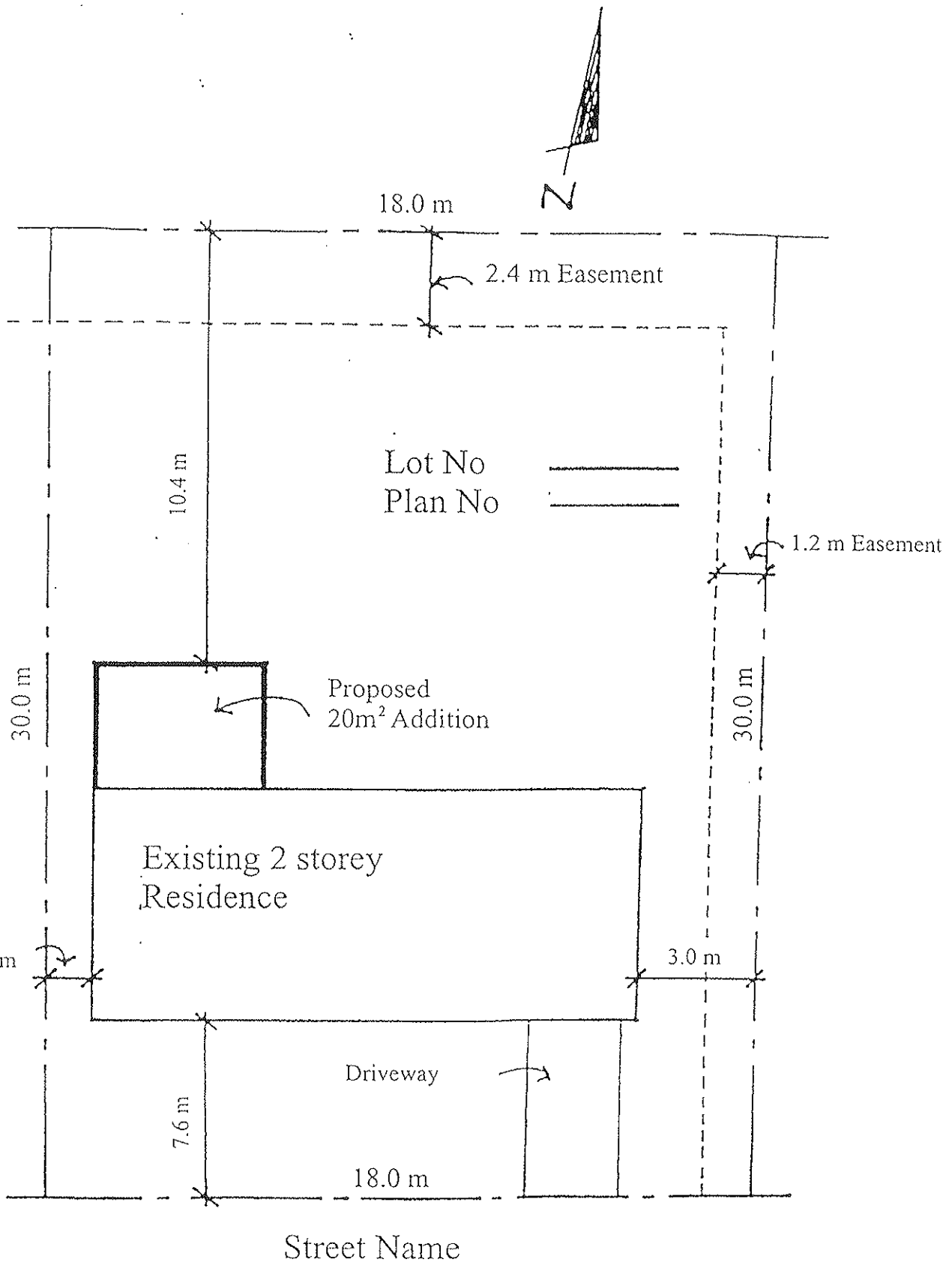
- 5 FOUNDATION WALL**
- 4" drainage layer
 - Dampproofing
 - 8" poured concrete wall
 - Moisture barrier
 - 2" x 4" studs @ 24" o.c
 - R8 insulation
 - 6 mil polyethylene vapour barrier

- 6 FOOTING**
- 8" x 16" continuous poured concrete strip footing
 - 4" diameter drainage tile with 6" stone cover

- 7 ANCHORAGE**
- 2" x 6" sill plate
 - 1/2" diameter anchor bolts @ 7'-10" o.c, 4" minimum into structure

- 8 CONNECTION**
- 2" x 10" ledger board with 1/2" diameter bolts @ 24" embedded 4" into structure
 - Galvanized joist hangers





SITE PLAN

Scale 1:250